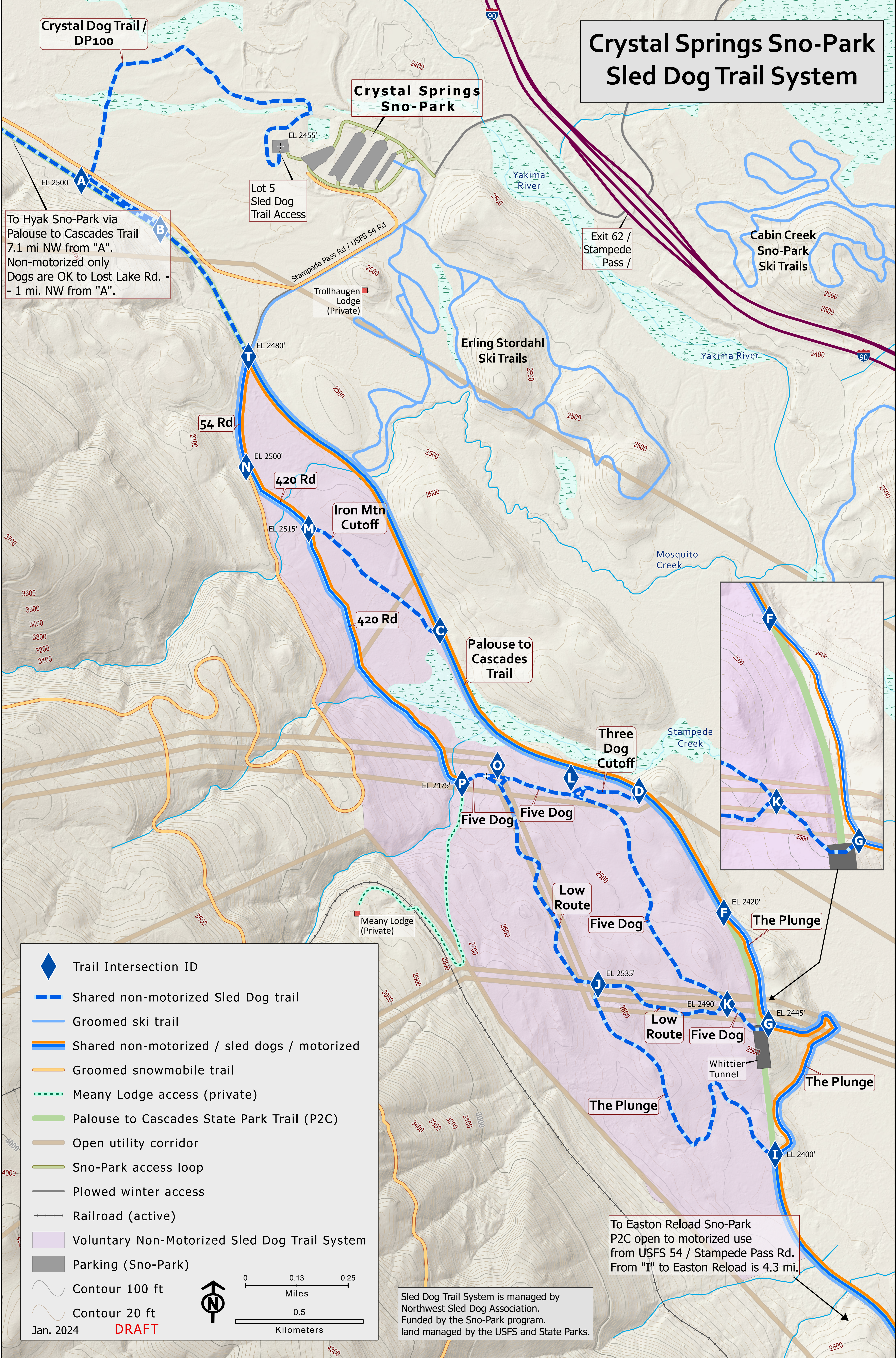


Crystal Springs Sno-Park Sled Dog Trail System



Crystal Dog Trail / DP100

Crystal Springs Sno-Park

To Hyak Sno-Park via Palouse to Cascades Trail 7.1 mi NW from "A". Non-motorized only Dogs are OK to Lost Lake Rd. - 1 mi. NW from "A".

Lot 5 Sled Dog Trail Access

Trollhaugen Lodge (Private)

Exit 62 / Stampede Pass /

Cabin Creek Sno-Park Ski Trails

Erling Stordahl Ski Trails

54 Rd

420 Rd

Iron Mtn Cutoff

Palouse to Cascades Trail

Three Dog Cutoff

Five Dog

Five Dog

Low Route

Five Dog

The Plunge

Low Route

Five Dog

Whittier Tunnel

The Plunge

The Plunge

To Easton Reload Sno-Park P2C open to motorized use from USFS 54 / Stampede Pass Rd. From "I" to Easton Reload is 4.3 mi.

Sled Dog Trail System is managed by Northwest Sled Dog Association. Funded by the Sno-Park program. Land managed by the USFS and State Parks.

- Trail Intersection ID
- Shared non-motorized Sled Dog trail
- Groomed ski trail
- Shared non-motorized / sled dogs / motorized
- Groomed snowmobile trail
- Meany Lodge access (private)
- Palouse to Cascades State Park Trail (P2C)
- Open utility corridor
- Sno-Park access loop
- Plowed winter access
- Railroad (active)
- Voluntary Non-Motorized Sled Dog Trail System
- Parking (Sno-Park)
- Contour 100 ft
- Contour 20 ft

Jan. 2024 **DRAFT**

0 0.13 0.25 Miles
0 0.5 Kilometers